



29 Henderson Court

North Road



SANDERSON
YOUNG



29 Henderson Court
North Road, Ponteland, NE20 9GY

A well presented two bedroom apartment, located on the first floor of this modern assisted living development in central Ponteland.

The apartment offers a prime position on the southern elevation of Henderson Court, with access to a private south facing balcony enjoying lovely views over the communal gardens.

Price Guide:
Guide Price £320,000

2 1 1 B



The internal accommodation comprises: Secure entry to communal areas | Lift & Stair access to all floors | Private reception hallway | Separate wc | Generous living/dining room with excellent elevated views over the communal gardens | Glazed French doors open up onto a private south facing balcony, which is a unique offering within Henderson Court | Fitted kitchen with integrated appliances.

Two double bedrooms, both of which offer fitted wardrobes | Bathroom/wet room/wc | Attractive communal gardens | Visitor parking.

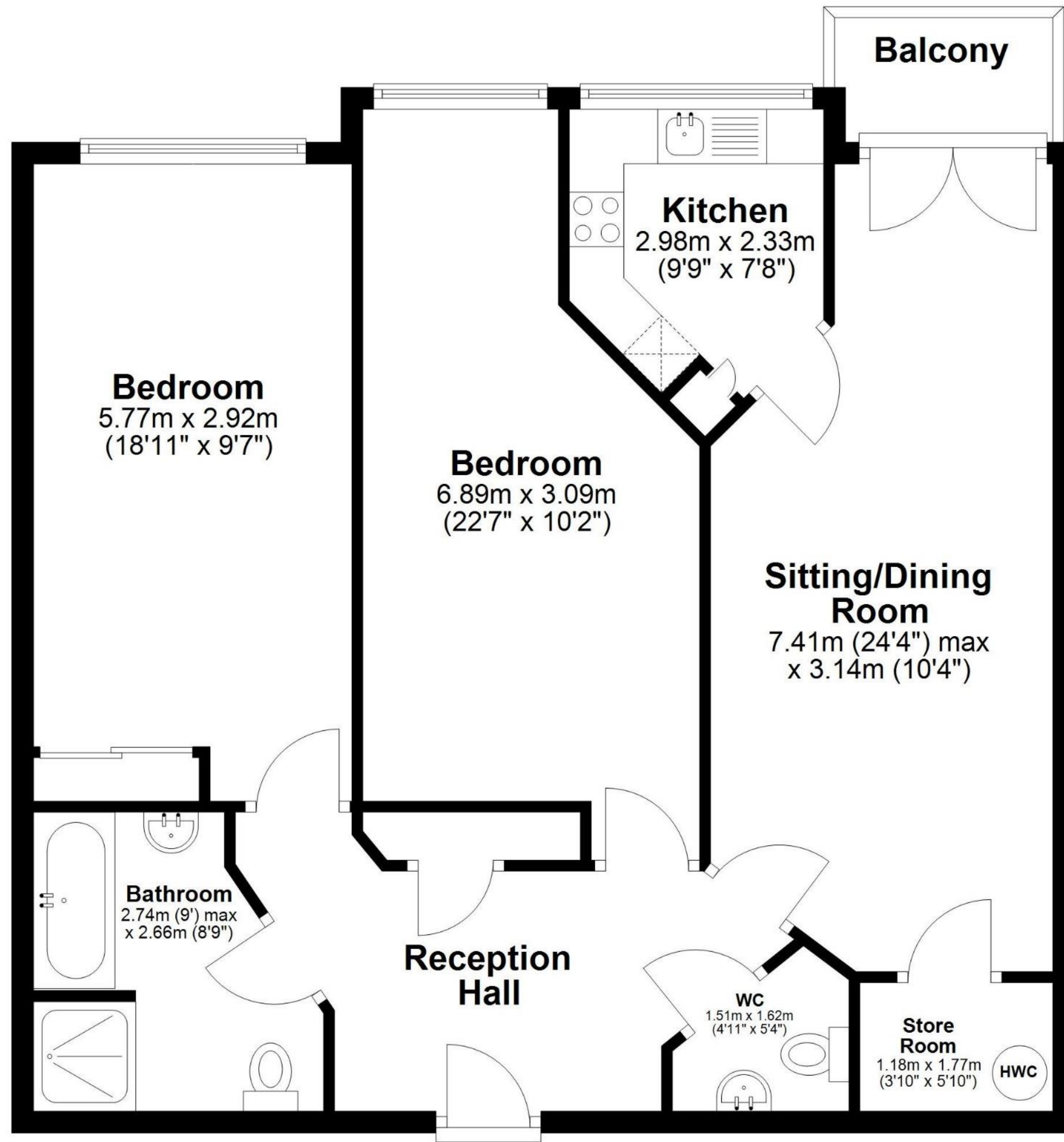


Julie Douglas
0191 213 0033
julie.douglas@sandersonyoung.co.uk



First Floor

Approx. 80.8 sq. metres (869.3 sq. feet)



Total area: approx. 80.8 sq. metres (869.3 sq. feet)

29 Henderson Court, Ponteland



This superb assisted living development is relatively unique compared with similar complexes, as it is located in the heart of Ponteland village, within easy walking distance of the wide variety of shops, cafes/restaurants, Church and local amenities. Henderson Court, for the over 70s, was completed in 2013 and current owners enjoy a daily domestic service, first class cuisine in the restaurant, a lively social life in a beautiful lounge where coffee is constantly available, helpful personal care - overall an excellent, extremely sociable quality of life. Services:

Mains Electric, Water & Drainage | Tenure: Leasehold |
Lease Remaining : 111 Years | Service Charge: £12,973.08
per annum | Council Tax: Band E | EPC: B